

Compiled by Nicholas Holmes, December 2015.

Combined research contributed by:
Nick Holmes (nick@holmes.org.nz)
Liz Martin
Tony Smith
John Mahoney
Graham Woodward

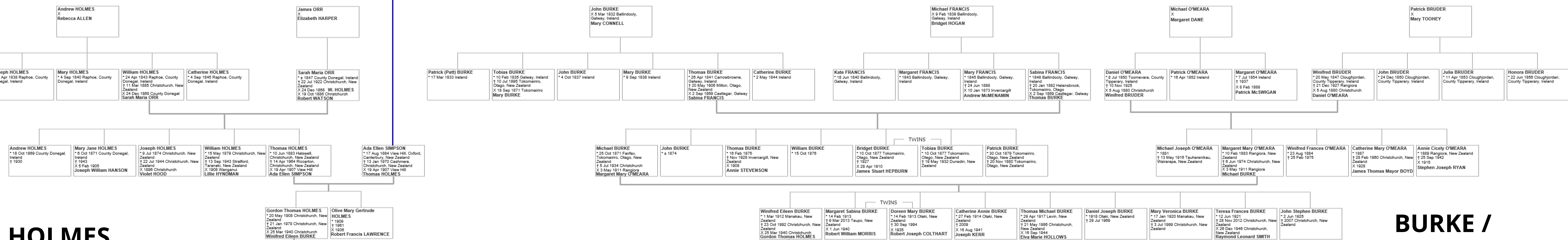
CRAWFORD

WHITLEY / WOODWARD

SIMPSON / TALLOTT

Ancestors & siblings of the HOLMES Family of Christchurch, New Zealand

holmes.org.nz



HOLMES
Y-DNA haplogroup R-FT411149
common ancestor circa 1350

BURKE / O'MEARA

7 children